

REMER

PEARL 900

LED SHAVING CABINET

FINISH

White Aluminium

PRODUCT CODE

P90D

SPECIFICATIONS

WIDTH	900mm
HEIGHT	900mm
DEPTH	146mm
WEIGHT	26kg

LIGHTING SPECIFICATIONS

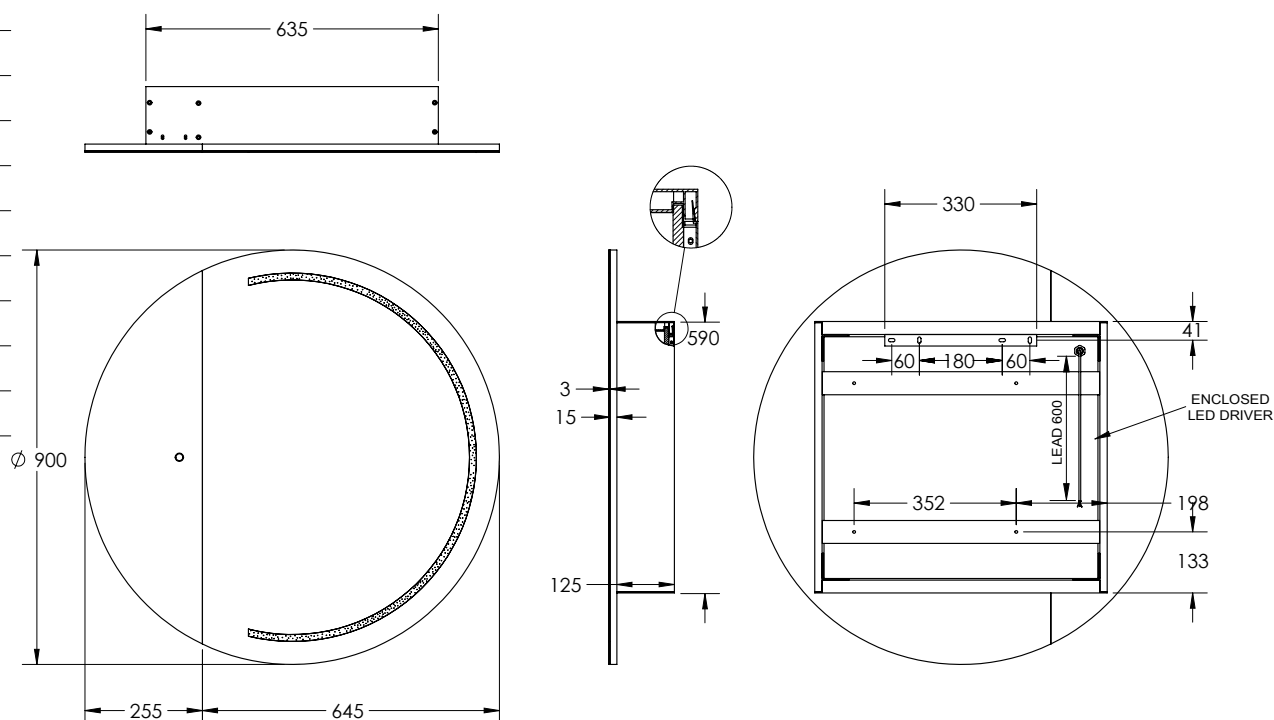
CCT	6500K – daylight
CRI	>80

INSTALLATION

Wall mount
Hardwired
Input voltage: 220-240v 50Hz
Includes wall mount split batten
Mounting holes are provided for semi-recessed mounting
Fully Reversible

FEATURES

Copper Free Mirror
LED Lighting (6500K)
Touch Sensor
Demister
Soft Close
Concealed Wire Technology
Adjustable Glass Shelves
Single-Sided Mirror Door
Recessable up to Door
Fully Reversible



Disclaimer: All LED Products requiring hardwiring must be installed by a licensed electrician in accordance with local regulations. Sizes are in mm and nominal and should be checked prior to installation. Actual colours may vary so please check colour samples before ordering. Installation is acceptance of our products. Installation of faulty, warped, chipped or damaged products will void our warranty.

13-15 Edison Road, Dandenong South VIC 3175
T (03) 9706 6663 E sales@remer.com.au W remer.com.au

REMER